

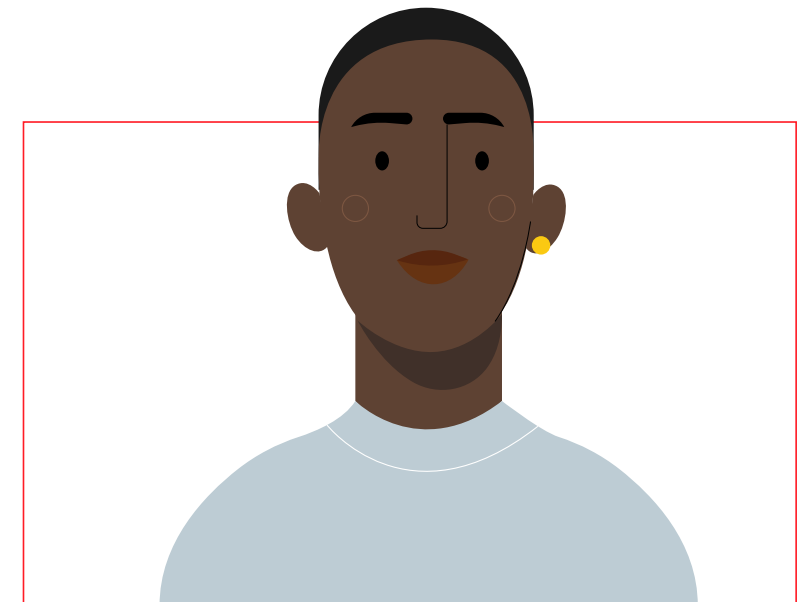
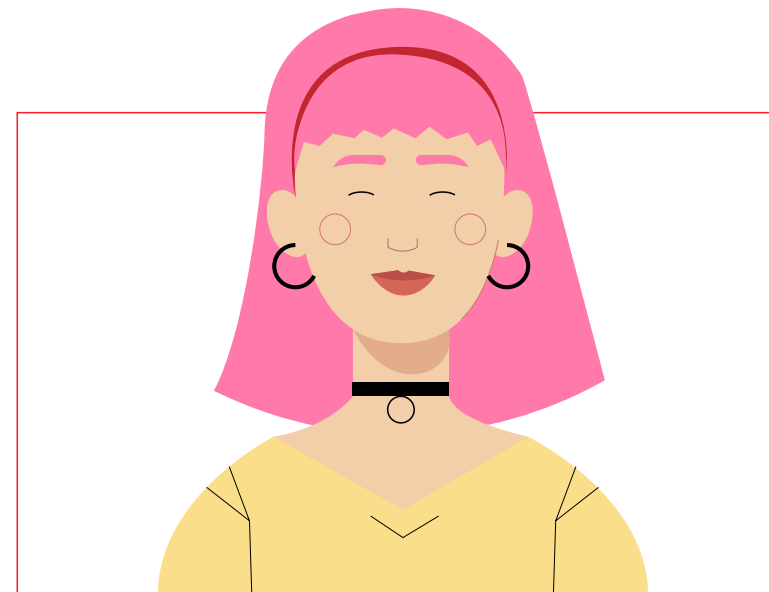
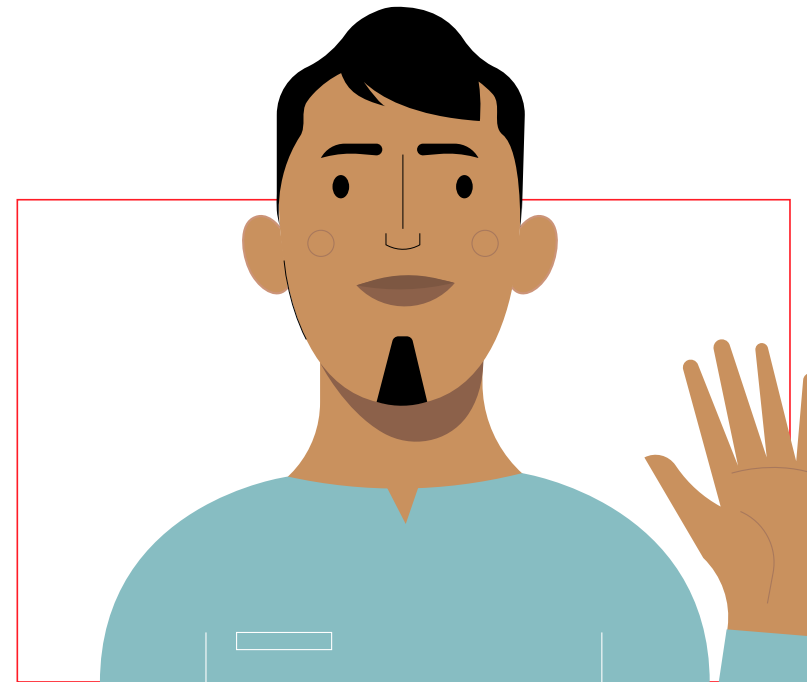


YEPPE.
INTERNATIONAL

HI! WE ARE YEPPE INTERNATIONAL.

We connect teachers and
tutors to schools worldwide.

Can we help your
school or company
find educators?
Of course, we can!

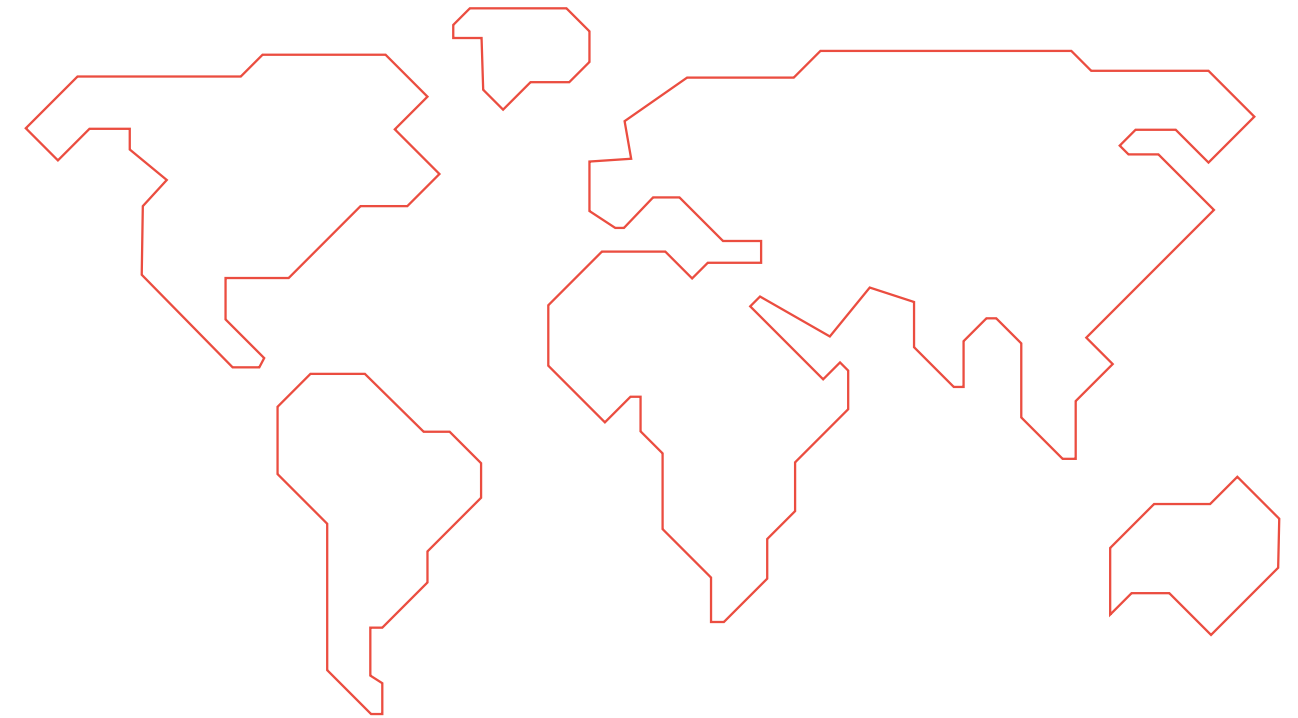


ABOUT YEPPE INTERNATIONAL

Y.

As a part of the Dutch organization “De Lesfabriek/ Yeppe” ([www.delesfabriek / www.yeppe.nl](http://www.delesfabriek.nl)) we connect teachers, tutors and coaches to different levels of educational organizations and considering our successful experience in The Netherlands now we also work internationally.

With Yeppe International we will provide a great experience for schools all around the world, who will benefit from the international background and experience of our educators. At the same time, we take the next step in finding great opportunities for the people in our network. We truly believe that an experience abroad will broaden their horizons forever.



OUR NETWORK

Our network consists of international students and young professionals. As a Dutch company, a high percentage of our team is Dutch, but we are expanding our team with teachers from all over the world .

Did you know that the Netherlands has the highest English proficiency in the world except for the English speaking countries?

90%

of the people in our network speaks 2 languages or more at level C1+.

68%

of the people in our network are between 21 and 27.

73%

of the people in our network have at least a Bachelor's degree.

78%

of the people in our network dream of going abroad.

HOW CAN WE WORK TOGETHER?

We have a lot of experienced teachers and we know our people. That's why we are sure we have exactly the one you need.

We believe there is no 'one size fits all' this is why we carefully select a profile that fits your requirements.

Working with us is very easy, you are only 3 steps away from getting a great international teacher.

Y.

#1

Tell us what can we help you with

First we want to get to know you! The more we know you, the easiest it is to find the right person for your project. We would like to know how your school is, what are the requirements for the educators you work with, which functions and specialties are you looking for and any information that could help us to find the right person. We select the right candidate for you.

#2

We select the right candidate for you

After the meeting, we use all the information to search meticulously in our large network of educators to find the professional that fits your needs the best. We know our teachers very well, so it is just to find the perfect match. Set up a meeting. We truly believe we have the right candidate, so you will receive information about our candidate and you can set up an online meeting to meet your match to decide if this is the person that can give to your school what you need.

#3

Ready!

Then it is just time to fly! Our enthusiastic educators will come to your school and be ready to support and help you achieve your goals. We are not just connecting people. We maintain a close relationship with you and our teachers. We support the process during the whole experience to make sure everything goes according to the expectations.

CAN WE HELP YOUR SCHOOL OR COMPANY FIND EDUCATORS?

Y.

Contact:

A. Yeppe International
De Lesfabriek/Yeppe
Vrieslantlaan 6
3526 AA UTRECHT

Joan Comellas
joan@yeppeinternational.com
0031 3 089 930 12

Instagram
LinkedIn

Tess Brink
tess@yeppeinternational.com
0031 6 428 052 16

YEPPE.
INTERNATIONAL

yeppeinternational.com